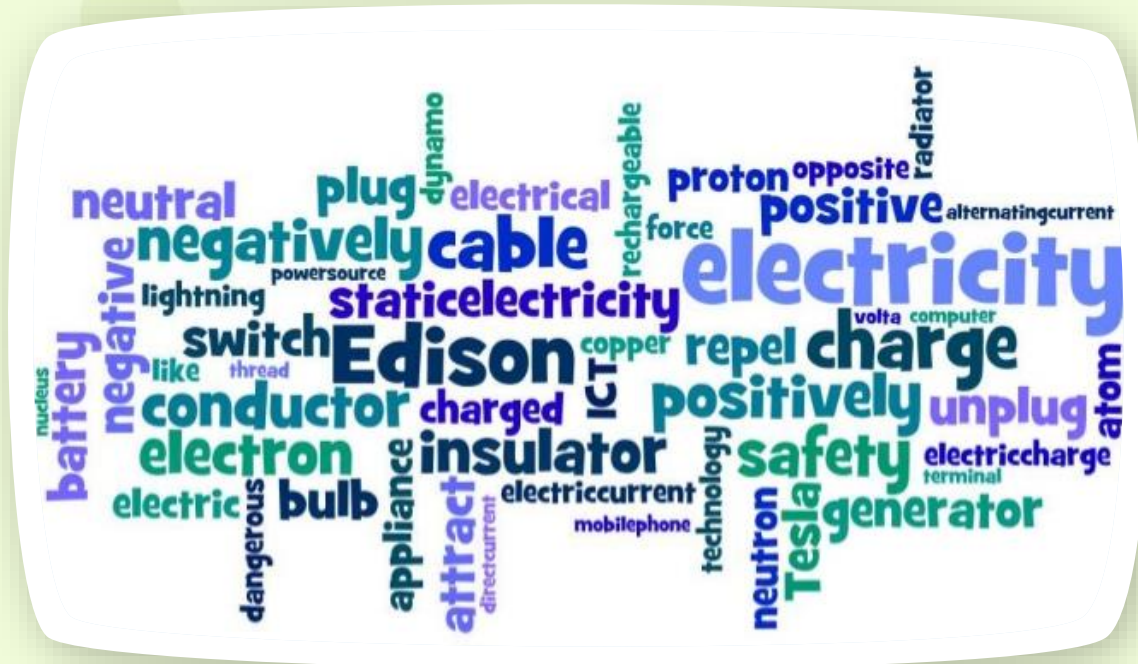


Fort Frances Power Corporation

Electrical Safety Information Guide & Colouring Book



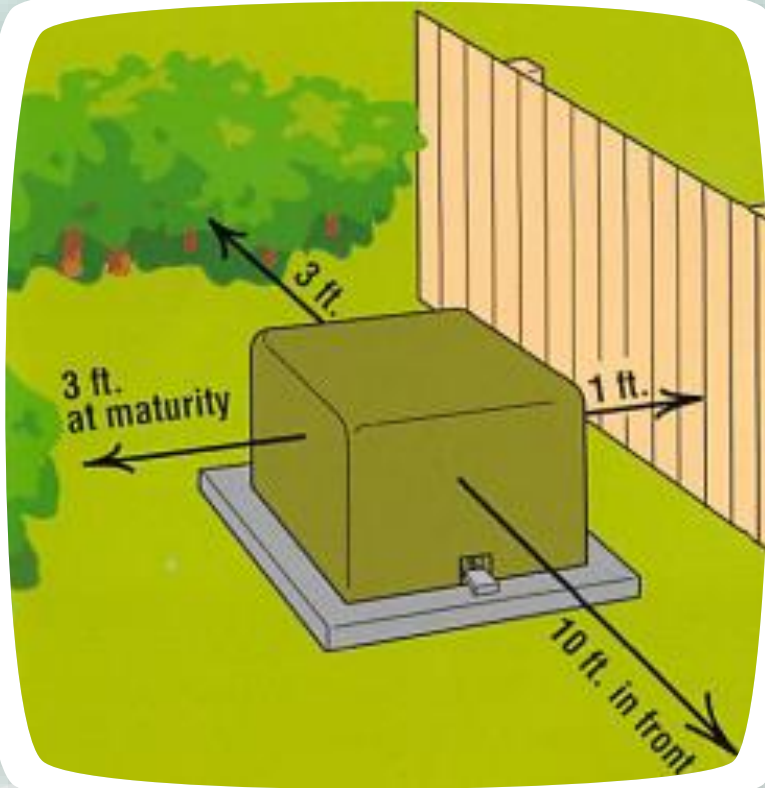
Electricity is all around us and is very useful but can also be very dangerous.



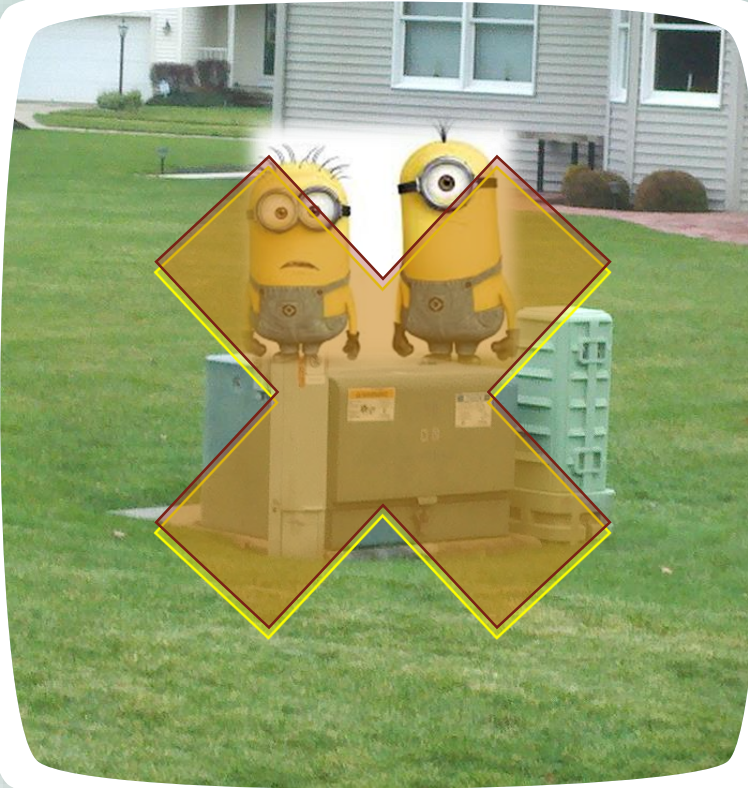
In this book we're going to learn about the electrical dangers that are all around us and how we can be safe around electricity.

Feel free to colour in all the black and white pictures.





Don't plant or build things to close to pad mount transformers.



Don't stand on or play around pad mount transformers.



Power stations and substations are extremely dangerous. Never climb the fence or try to enter the area.

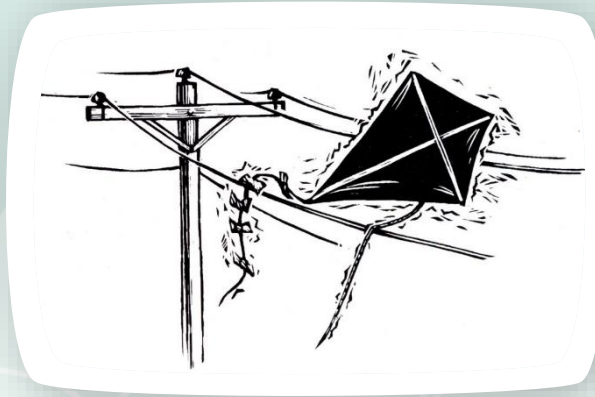
~~BAD~~

DANGER
KEEP OUT



©ElementarySafety.com

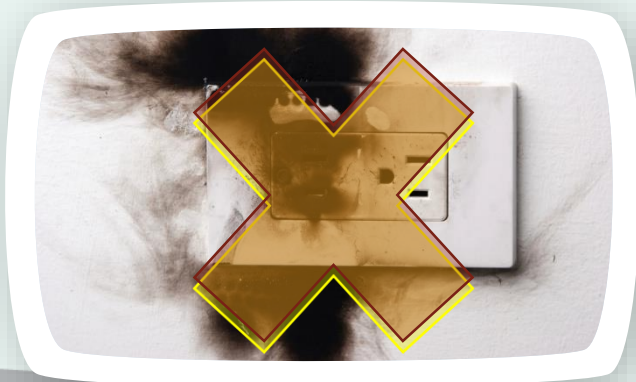
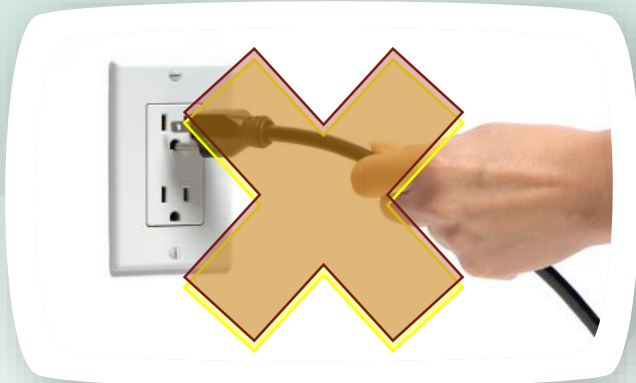
©ElementarySafety.com



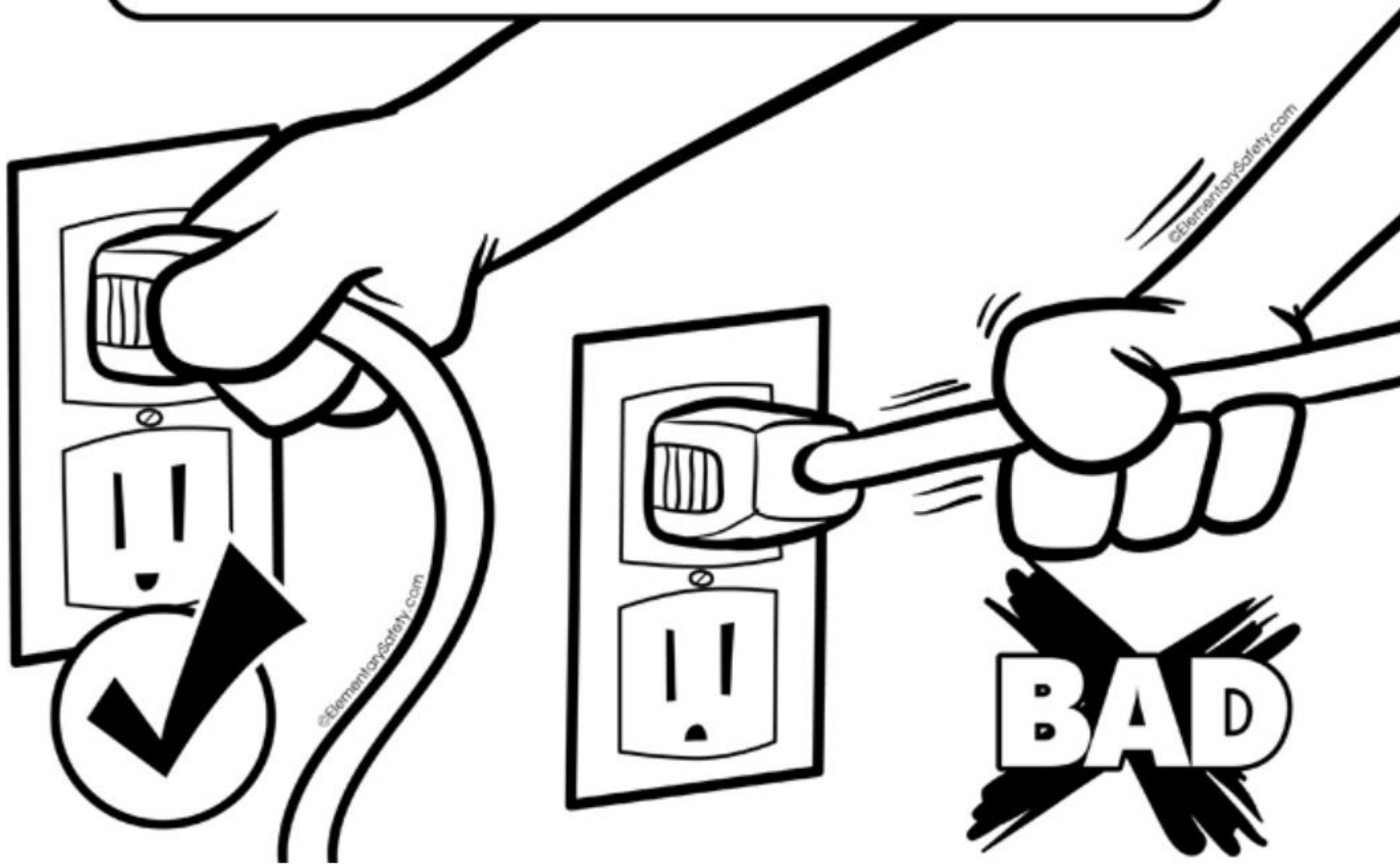
Flying a kite can be fun but make sure you don't fly them near power lines.



Never fly a kite near power lines. Always go to an open area like a field.



Always unplug an appliance before fixing it or filling it.
Unplug things by pulling on the plug, NOT the cord.



Never stick anything other
than a plug into an outlet.
Make sure that little kids don't
play with the outlets.

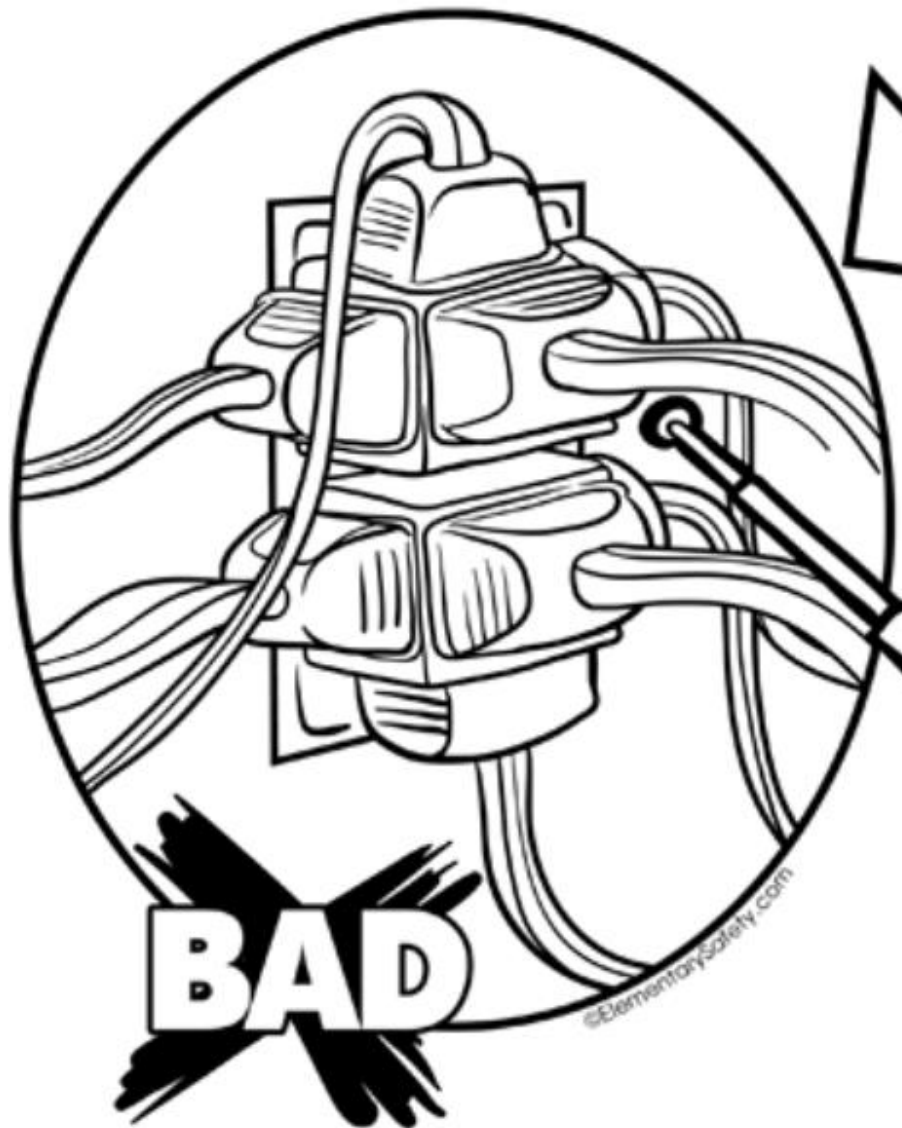


IF YOUR TOAST GETS STUCK
IN THE TOASTER, UNPLUG IT
BEFORE YOU USE A FORK
OR KNIFE TO GET IT OUT.



An electrical octopus is a dangerous animal to keep around the house.

DO NOT OVERLOAD
OUTLETS WITH TOO
MANY THINGS
PLUGGED INTO THEM.



©ElementarySafety.com

©ElementarySafety.com

Do not use anything
with a frayed or
damaged cord. They
could shock you or
even start a fire!



©ElementarySafety.com



©ElementarySafety.com

Downed power lines and car safety

If you're ever involved in a car accident with a power line or utility pole, **DO NOT** exit your vehicle unless it catches fire.



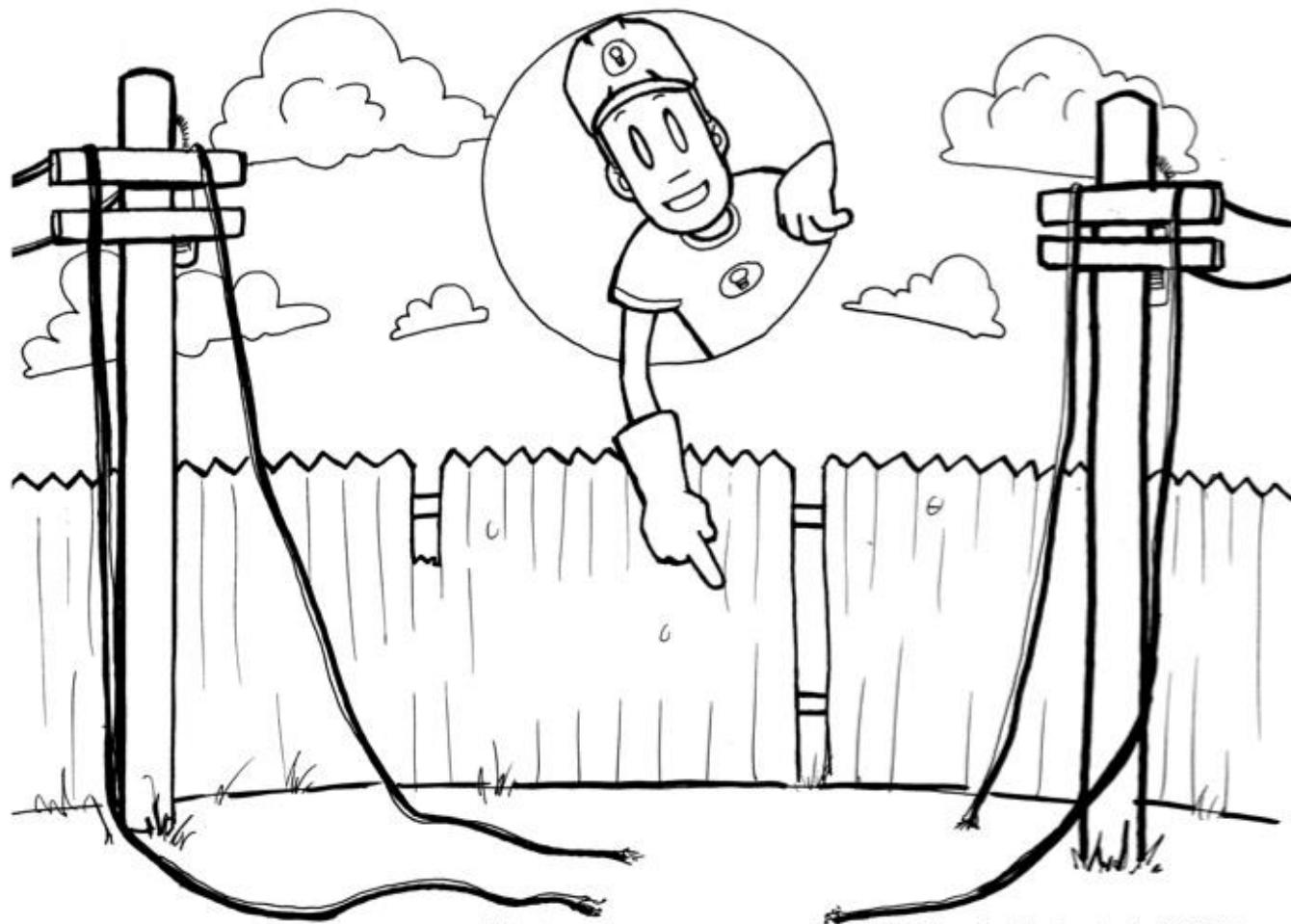
If your car catches fire:

1. Jump clear and land on both feet.
2. Keep both feet together.
3. Shuffle away from the car.

Car safety tips:

- Never touch a car (or someone in a car) that is in contact with power lines.
- Never touch an object that is touching power lines.
- Never approach a car that has hit a utility pole. There could be lines on the ground. Instead call for help.
- Never drive over downed power lines; they may be energized or become entangled in your car.

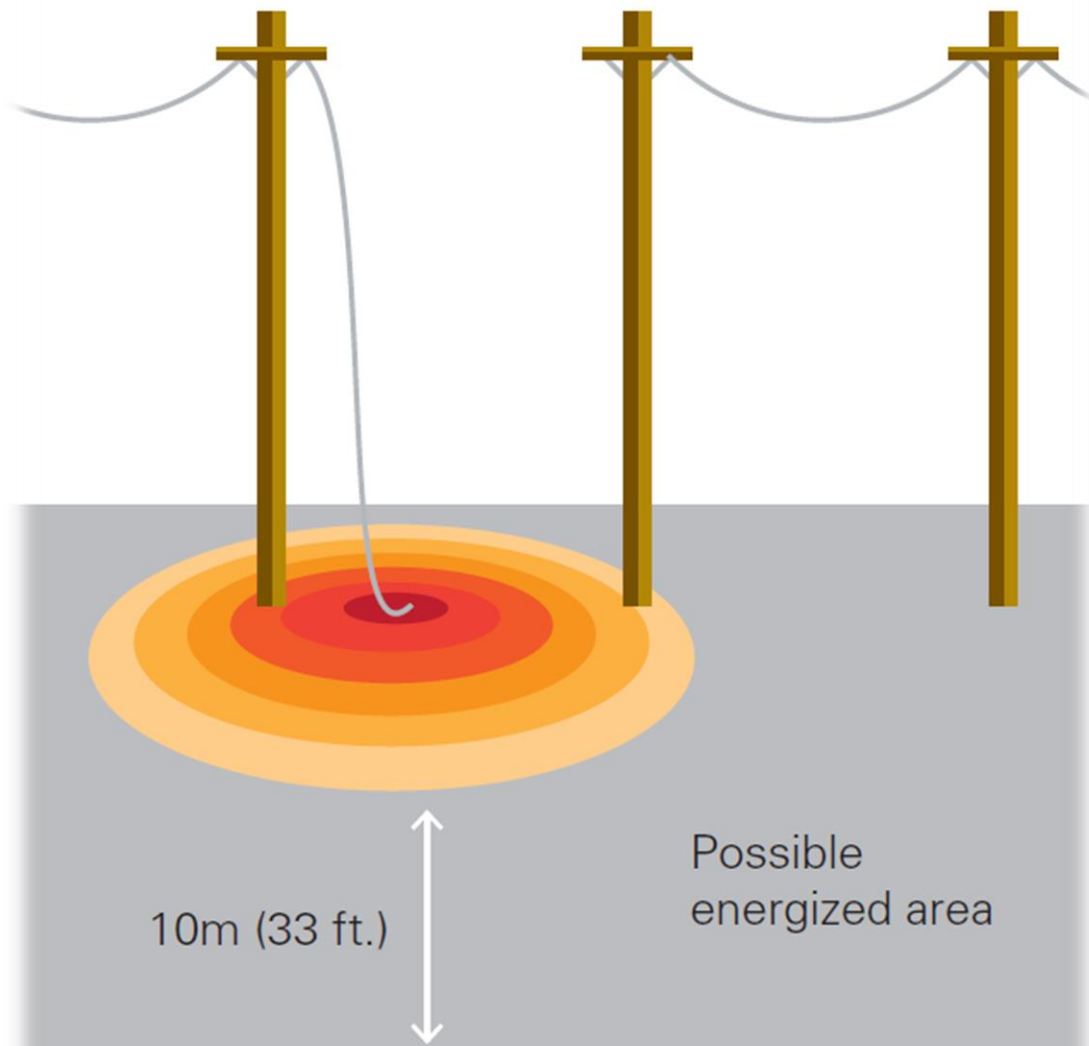
Downed Power Lines
Stay away. Don't touch. Call 911.



Safetytopics.com

Copyright 2013 Potter and Associates International, Inc. 800.259.6209


WIRE DOWN



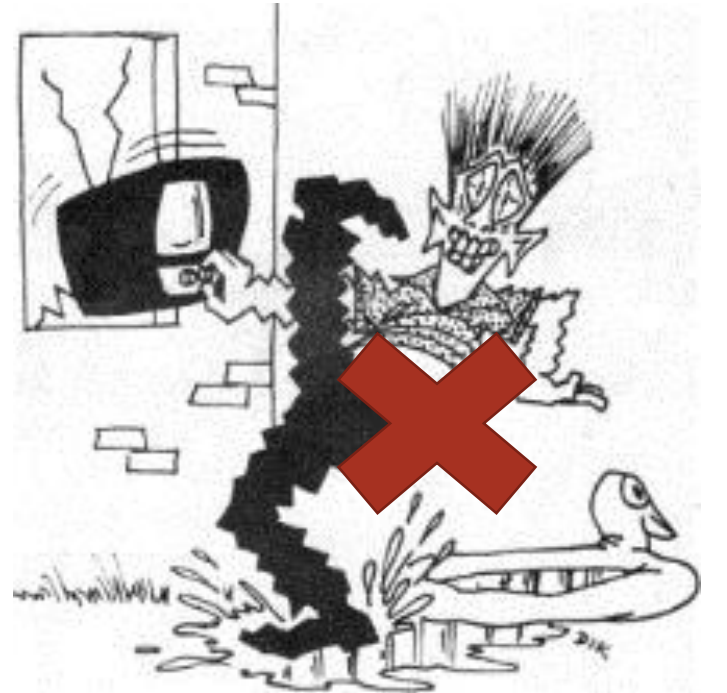
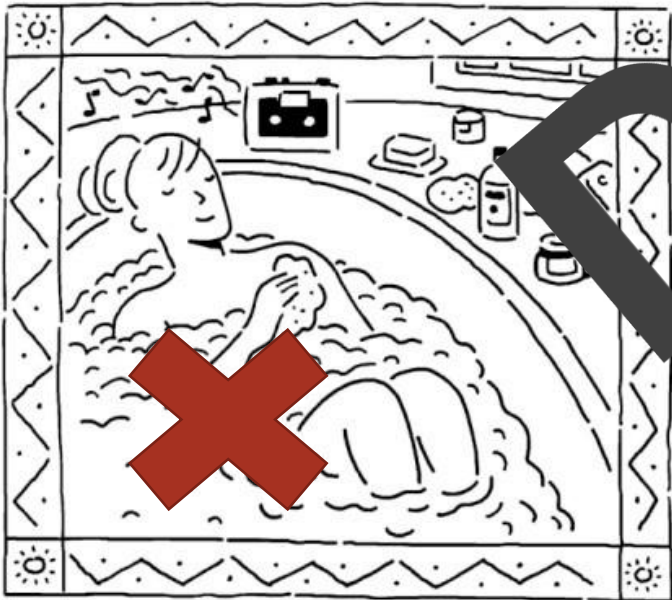
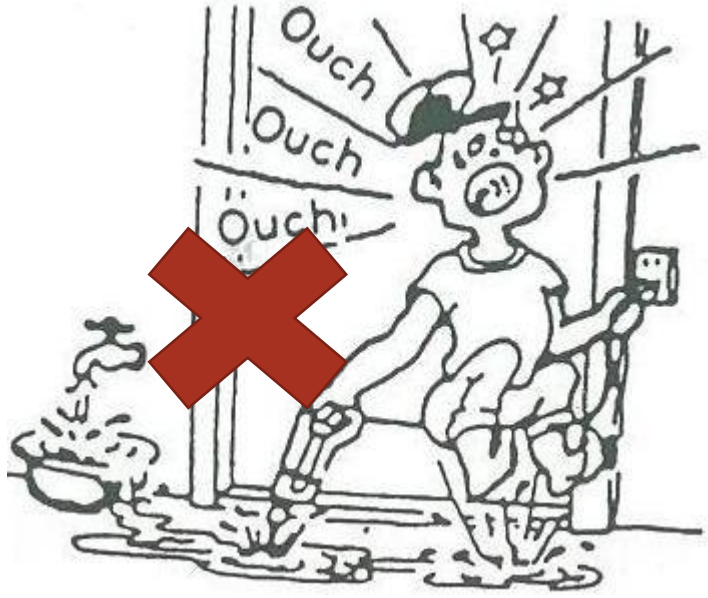
10m (33 ft.)

Possible energized area

Ground may be energized for up to 10 metres.
Do not enter this potentially energized area.



Stay away from fallen
electrical lines and report
them immediately!



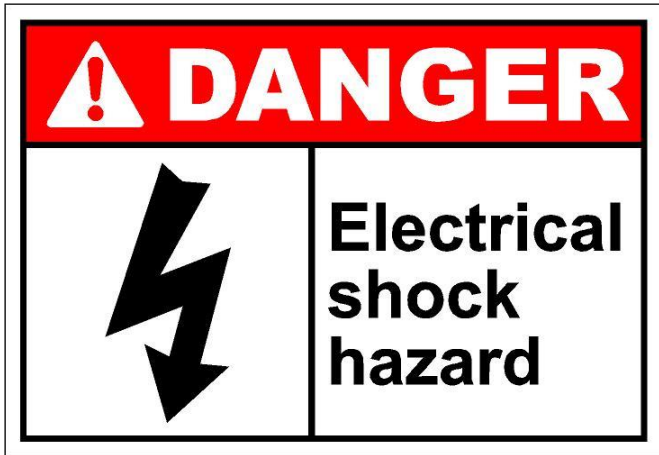
Danger

Water & Electricity do not mix!





Look out
for & Obey
all
warnings
signs



Help Louie find his way home



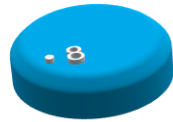
Flew kite into power lines
Miss 2 turns



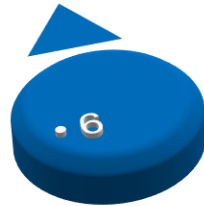
Warned other children about a fallen power line
Free spin



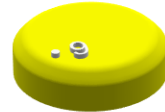
Climbed on roof near power lines to retrieve ball
Spin the wheel & move back to the colour it stops on



Stopped baby from playing with socket
Move to 11



Unplugged something by pulling on cord
Miss one turn



Told your parents about a broken power cord
Move up 2 spaces



Had an electrical appliance too close to water
Go back 9 spaces



Saw a loose wire in a plug and told your parents
Move up 1 space

You created an electrical octopus
Move back 4



Work Safe
Play Safe
Be Safe

